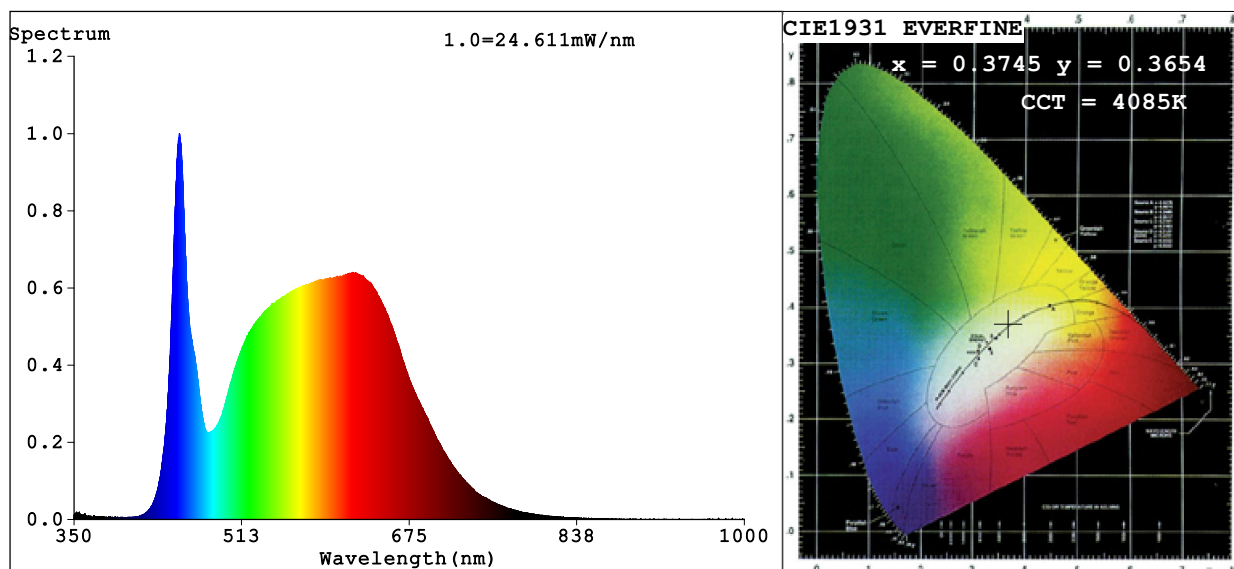


Spectrum Test Report



Color Parameters:

Chromaticity Coordinate: $x=0.3745$ $y=0.3654$ $u'=0.2257$ $v'=0.4956$

CCT=4085K (Duv=-0.0036) Dominant WL:Ld =581.1nm Purity=22.0%

Ratio:R=19.6% G=76.5% B=4.0%; Peak WL:Lp=452.2nm FWHM=18.2nm

Render Index:Ra=92.3 CRI=88.7 TM30:Rf=88 Rg=101

R1 =93 R2 =95 R3 =93 R4 =92 R5 =92 R6 =90 R7 =95

R8 =89 R9 =72 R10=85 R11=91 R12=66 R13=94 R14=96 R15=93

Photo Parameters:

Flux = 990.6 lm Eff. : 81.89 lm/W Fe = 3.470 W

Electrical parameters:

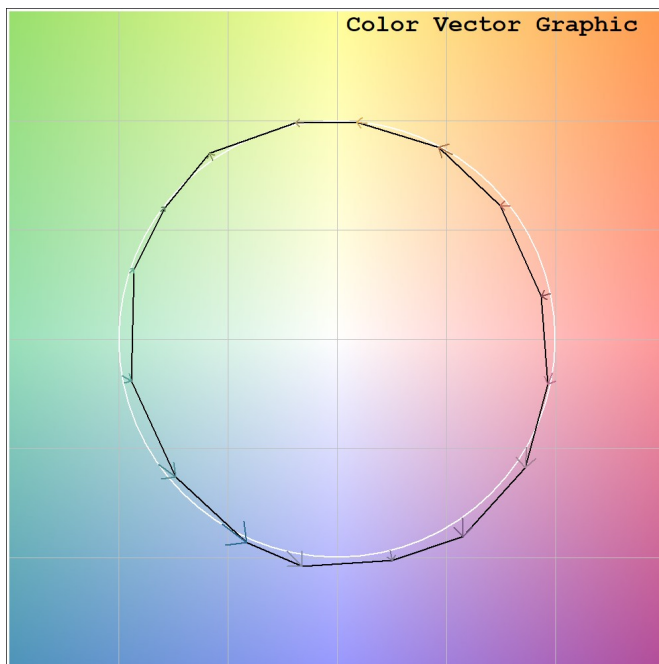
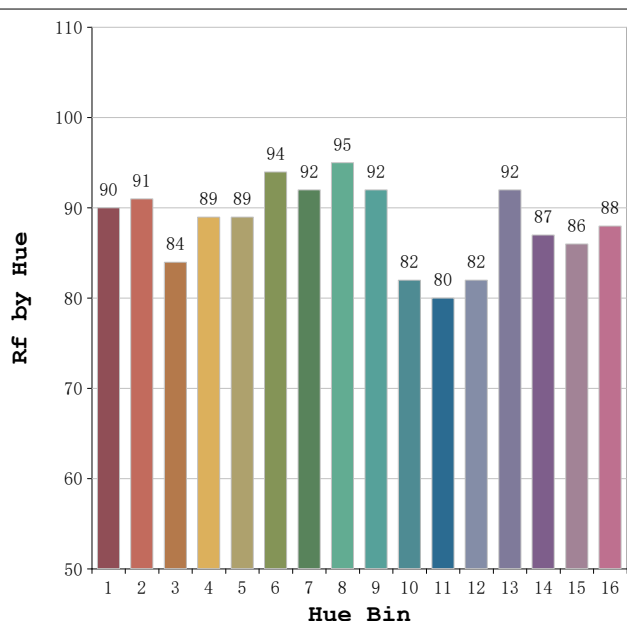
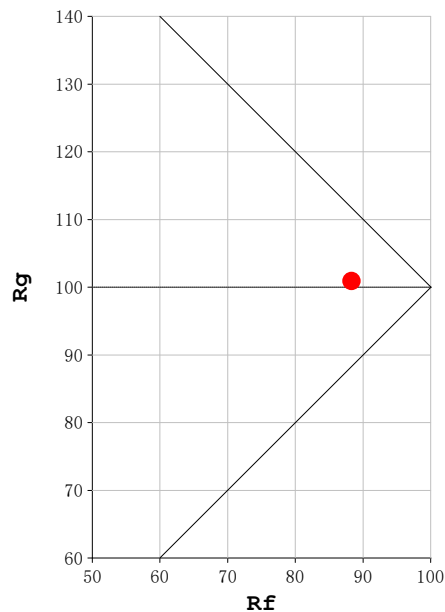
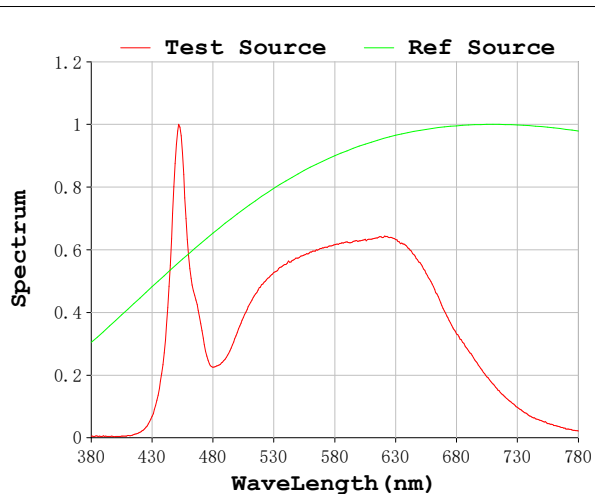
V = 23.998 V I = 0.5041 A P = 12.10 W PF = 1.000

Status: Integral T = 1887 ms Ip = 49880 (76%)

Model:Ecoled Neón Cairo 4000
Tester:Sergio Carneros
Temperature:20Deg
Manufacturer:Luz Negra

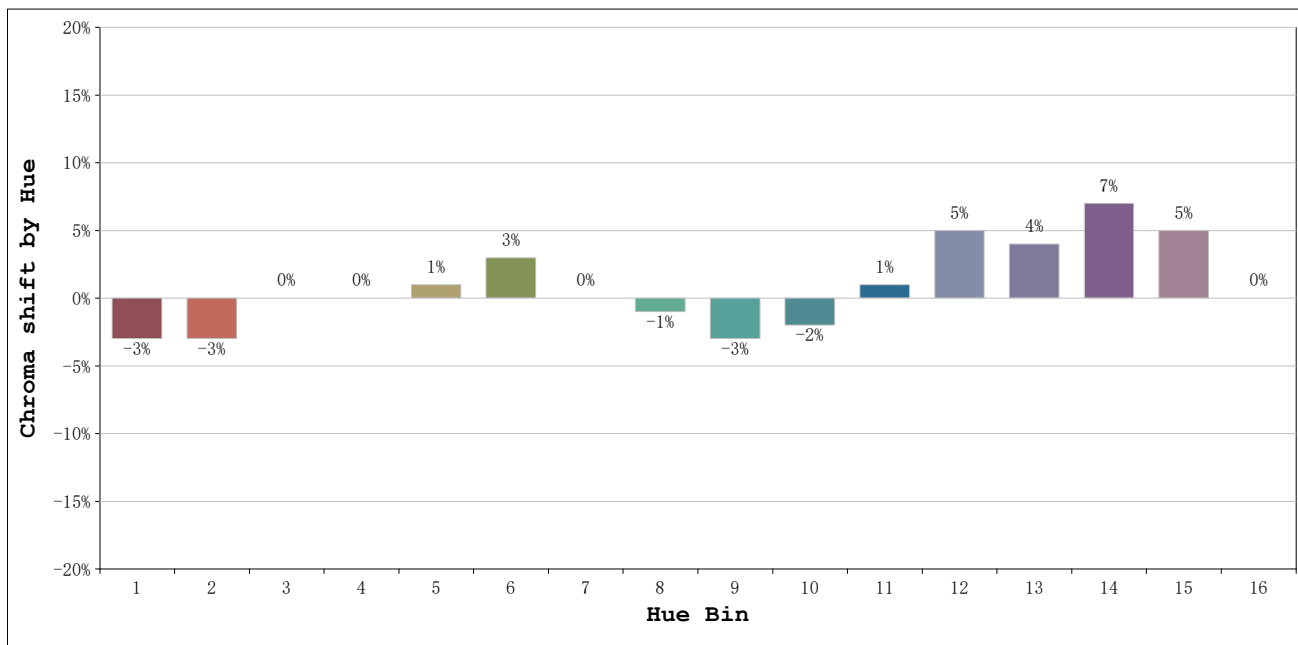
Number: 10.264
Date:2025-03-25 13:00:59
Humidity:50%
Remarks:100cm de neón

Rf: 88 **CCT: 4085 K** **u': 0.2257**
Rg: 101 **Duv: -0.0036** **v': 0.4956**



Model:Ecoled Neón Cairo 4000
 Tester:Sergio Carneros
 Temperature:20Deg
 Manufacturer:Luz Negra

Number: 10.264
 Date:2025-03-25 13:00:59
 Humidity:50%
 Remarks:100cm de neón



| | | | Graphic shift(%) | |
|---------|-----------------|----|------------------|-----|
| Hue Bin | Hue Angle | Rf | Chroma | Hue |
| 1 | 0.0° - 22.5° | 90 | -3 | 0 |
| 2 | 22.5° - 45.0° | 91 | -3 | 3 |
| 3 | 45.0° - 67.5° | 84 | 0 | 7 |
| 4 | 67.5° - 90.0° | 89 | 0 | 5 |
| 5 | 90.0° - 112.5° | 89 | 1 | 3 |
| 6 | 112.5° - 135.0° | 94 | 3 | 0 |
| 7 | 135.0° - 157.5° | 92 | 0 | -2 |
| 8 | 157.5° - 180.0° | 95 | -1 | -1 |
| 9 | 180.0° - 202.5° | 92 | -3 | 3 |
| 10 | 202.5° - 225.0° | 82 | -2 | 9 |
| 11 | 225.0° - 247.5° | 80 | 1 | 14 |
| 12 | 247.5° - 270.0° | 82 | 5 | 8 |
| 13 | 270.0° - 292.5° | 92 | 4 | 0 |
| 14 | 292.5° - 315.0° | 87 | 7 | -3 |
| 15 | 315.0° - 337.5° | 86 | 5 | -7 |
| 16 | 337.5° - 360.0° | 88 | 0 | -4 |

Model:Ecoled Neón Cairo 4000
 Tester:Sergio Carneros
 Temperature:20Deg
 Manufacturer:Luz Negra

Number: 10.264
 Date:2025-03-25 13:00:59
 Humidity:50%
 Remarks:100cm de neón